

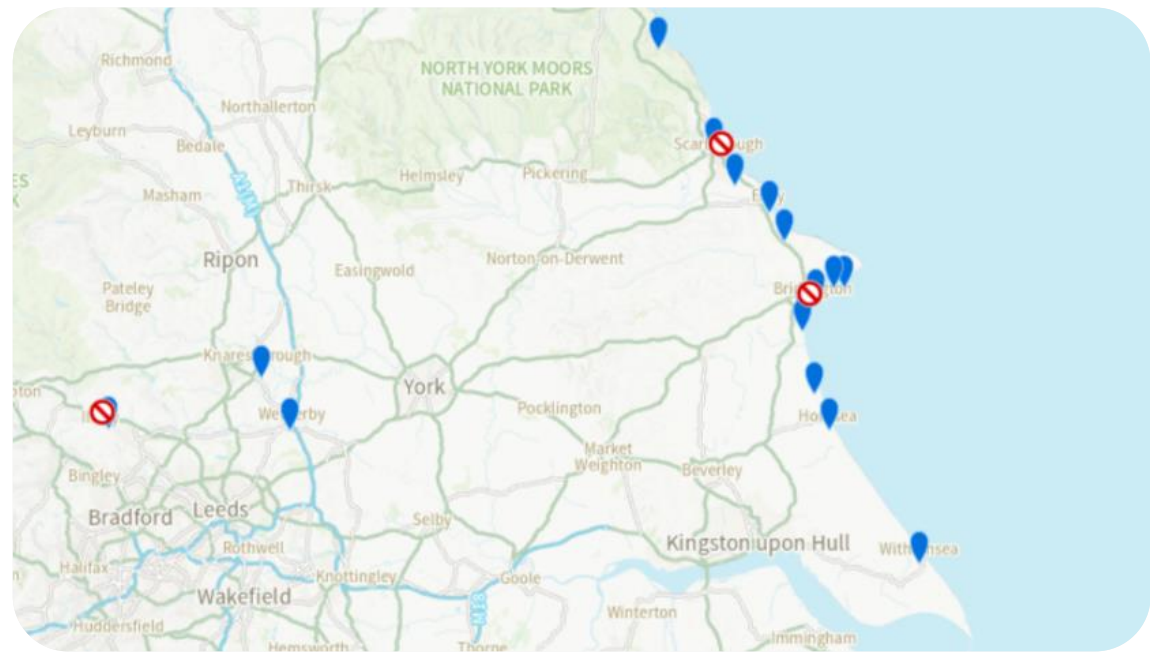
# Yorkshire Water Bathing Waters Ilkley STW Integrated Constructed Wetland

# What is a Bathing Water?

- A bathing water is defined as: a surface water area where many people are expected to bathe. They must meet quite strict criteria relating to access, amenities and signage informing the public about the bathing water.
- We now have 21 bathing sites in Yorkshire, 3 inland riverine and 18 coastal.
- These are monitored by the Environment Agency for water quality with periodic sampling from May to September each year.



# Current location of Yorkshire Bathing Waters



Locations and sample data can be found at the Swimfo website

<https://environment.data.gov.uk/bwq/profiles/>

<a href="#">Danes Dyke, Flamborough</a>	East Riding of Yorkshire	unavailable ?	★★★★ excellent ?	★★★★ excellent ?	★★★★ excellent ?	★★★★ excellent ?	IE: 10 EC: 18 02 Aug 2024	IE: 10 EC: 10 14 Aug 2024	IE: 18 EC: 10 19 Aug 2024	IE: 240 EC: 82 24 Aug 2024
<a href="#">Filey</a>	Scarborough	No warnings in place	★★★ good ?	★★★ good ?	★★★ good ?	★★★ good ?	IE: 27 EC: 10 02 Aug 2024	IE: 27 EC: 27 08 Aug 2024	IE: 240 EC: 180 15 Aug 2024	IE: 73 EC: 36 19 Aug 2024
<a href="#">Flamborough South Landing</a>	East Riding of Yorkshire	unavailable ?	★★★ good ?	★★★★ excellent ?	★★★★ excellent ?	★★★★ excellent ?	IE: 18 EC: 100 09 Aug 2024	IE: 10 EC: 10 14 Aug 2024	IE: 10 EC: 10 19 Aug 2024	IE: 200 EC: 82 24 Aug 2024
<a href="#">Fraisthorpe</a>	East Riding of Yorkshire	No warnings in place	★★★ good ?	★★★ good ?	★★★ good ?	★★★ good ?	IE: 18 EC: 110 09 Aug 2024	IE: 55 EC: 27 14 Aug 2024	IE: 18 EC: 82 19 Aug 2024	IE: 150 EC: 100 24 Aug 2024
<a href="#">Hornsea</a>	East Riding of Yorkshire	unavailable ?	★★★★ excellent ?	★★★ good ?	★★★★ excellent ?	★★★★ excellent ?	IE: 10 EC: 10 09 Aug 2024	IE: 10 EC: 18 14 Aug 2024	IE: 10 EC: 64 19 Aug 2024	IE: 18 EC: 10 24 Aug 2024



Don't pay my bill until water firm cleans up act on sewage dumping

METRO.com.uk plum Life flows when your money's motivated

WATER BOMBERS! WATERBOMBERS! YOU'LL FOOT BILLS FOR SEWAGE SPILLS

More bathing sites for cleaner rivers

COMMENT SELAINE SAXBY TRY MP for Devon

Can you cook like a Bear? The Bear Brand

tax on water companies now

WILD BATHING SEWAGE SHUCK SWIMMING IN FILTH

BRITAIN'S BEST GARDENS TO VISIT THIS SUMMER

UK POLITICS

Water companies face £800m legal action over raw sewage allegations

Labour vows crackdown on sewage-dumping water companies

Isle of Wight Observer

What Lurks Beneath? Southern Water's sewage shame

English water companies offer apology and £10bn investment for sewage spills

Down the drain: how billions of pounds are spent on England's water system

No river safe for bathing

Shock at bathing spot pollution

Water firms discharged raw sewage into English waters 400,000 times last year

UK bathing water ranks next from last in EU

People Local bathers complain of debilitating health issues

My dating after divorce

Environment: Report raises concerns at

Water firms discharged raw sewage into English waters 400,000 times last year

Water firms discharged raw sewage into English waters 400,000 times last year

Water firms discharged raw sewage into English waters 400,000 times last year



SCANDAL

The most outrageous sewage stories of 2023 - as raw waste continues to be spilled into our rivers and seas

REE! National World App

Coastal E.coli sees increase

Water firms discharged raw sewage into English waters 400,000 times last year



# How they are managed by Yorkshire Water.

- 4 Bathing Water Managers in role each with specific focuses to be more targeted.
- 2 ways of understanding how we work.
- Monitoring current performance and working with operations to address any issues.
- Informing and driving strategic investments for long term improvements in performance.

# Partners

- Partnership working is essential for improving bathing waters.
- Need a collaborative and joined up approach to make lasting difference in the area, whilst we have a big part to play, it is not just water companies that have an impact on designated bathing waters.



# Ilkley STW Integrated Constructed Wetland Proposal



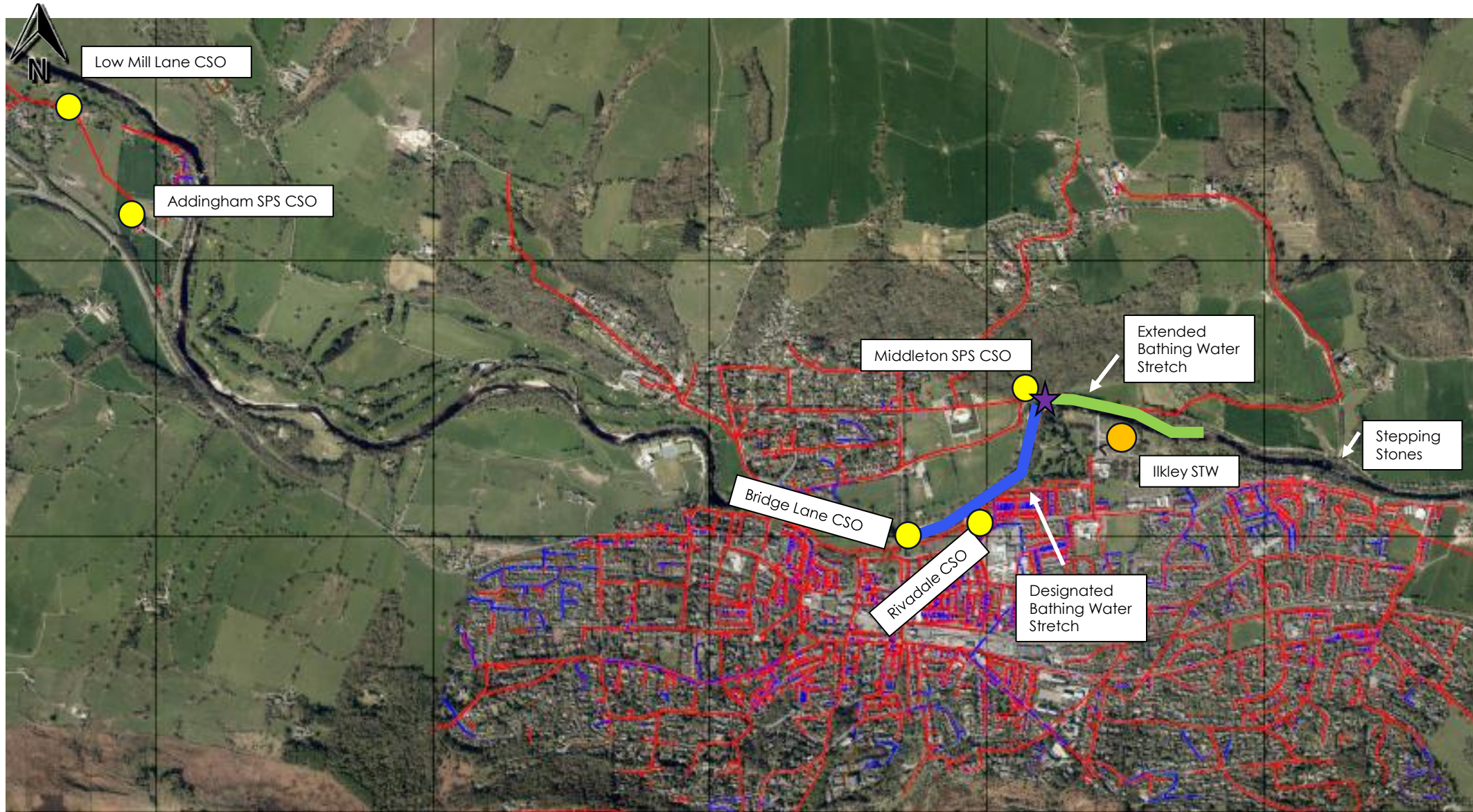
YorkshireWater







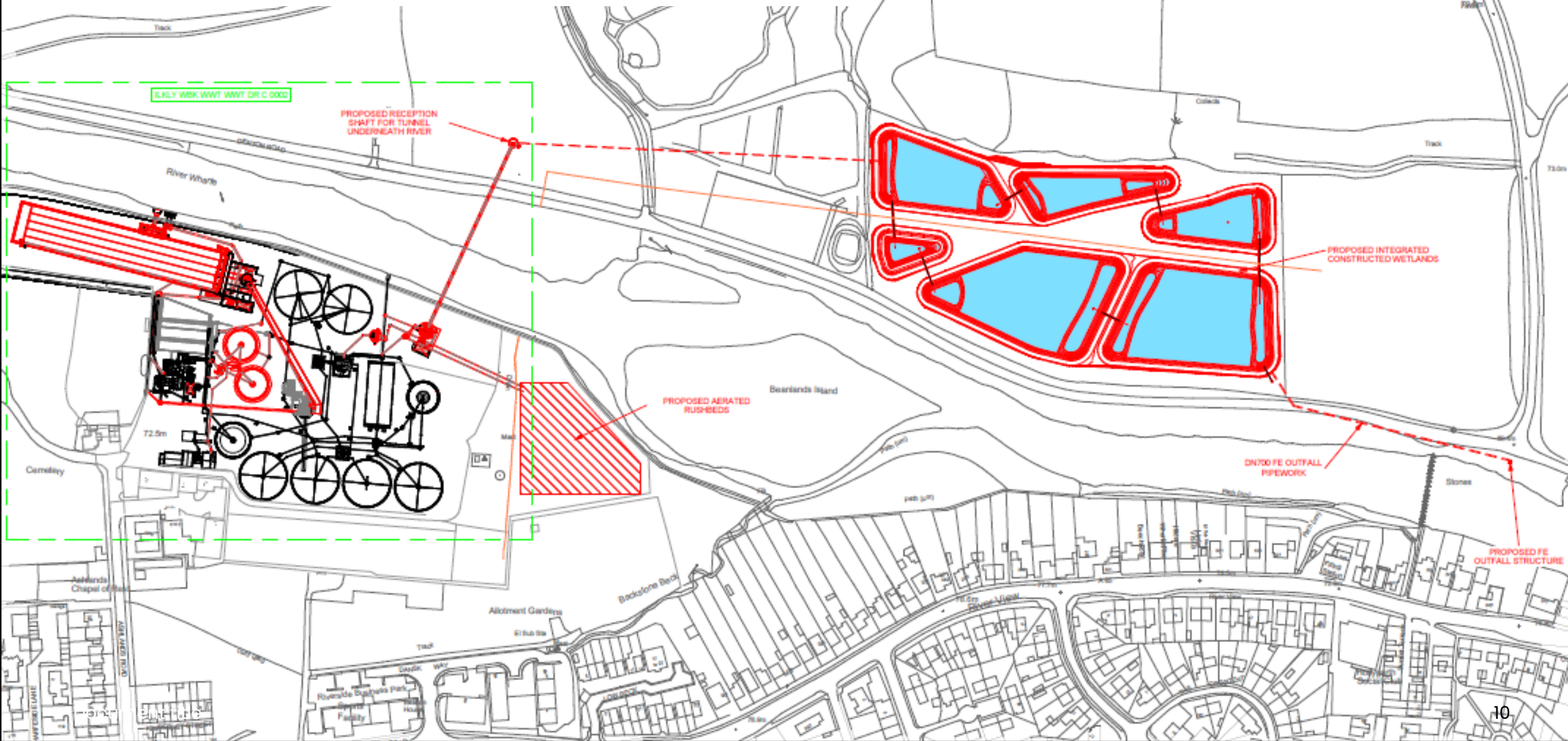
# Inland bathing water improvement scheme – Wharfe Ikley



- Storm spill locations
- ★ EA Sampling point
- Designated Bathing Water Stretch
- Extended Bathing Water Stretch as per YW commitment



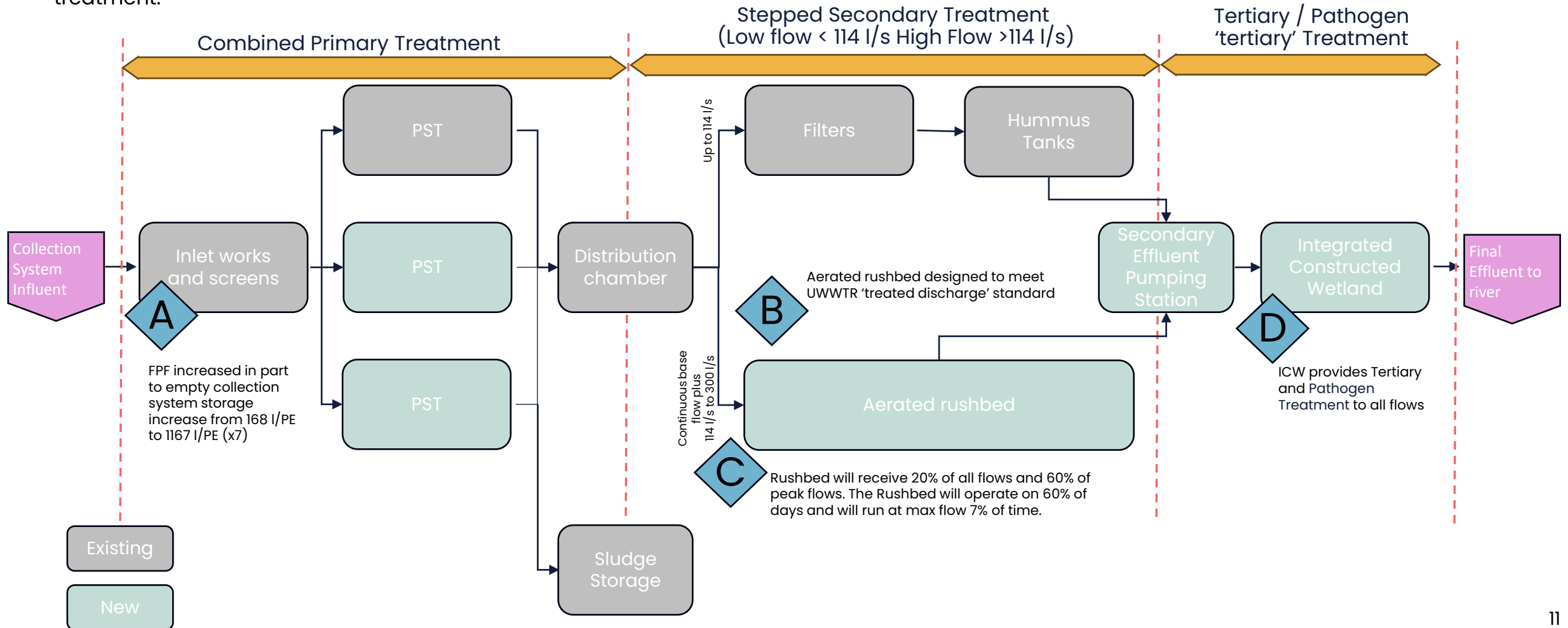
# Preferred solution - Draft GA





# Ilkley WasteWater Treatment Works

An integrated solution has been developed to meet the Bathing Water and Environment Act drivers within the Ilkley drainage catchment (BW\_IMPI, BW\_IMP4 and EnvAct\_IMP3). An increase in FFT is proposed at Ilkley STW to enable stored flows within the upstream catchment to drain down and return to treatment as soon as reasonably practicable. All flows entering the increased FFT process will be screened and primary settled. Flows up to existing FFT will remain through the conventional process. A continual base flow, plus flows from 114 l/s to 300 l/s will enter the aerated rushbed for secondary treatment.



The scheme is onsite commencing enabling works and is scheduled to complete by 31/03/26.











# What can you do?



**BIN IT.  
DON'T BLOCK IT.**

- Bin it, don't block it. Remember the 3 P's. Pee, Poor and Paper.
- Surface Water Separation, primarily for new developments.
- SUDs (Sustainable Urban Drainage Solutions) – water butts, planter beds, avoiding tarmacking.
- Misconnections.
- Encourage others!