

Ilkley Clean River Group Update

March 2024



YorkshireWater

Ilkley Clean River Group Update

March 2024

Overview:

- Outstanding Queries
- Accelerated Infrastructure Delivery Project
 - Upstream Storm Overflows
 - Ilkley Wastewater Treatment Works
- AMP 7 Storm Overflow Reduction
- Engagement Event

Outstanding Queries

Customer Research

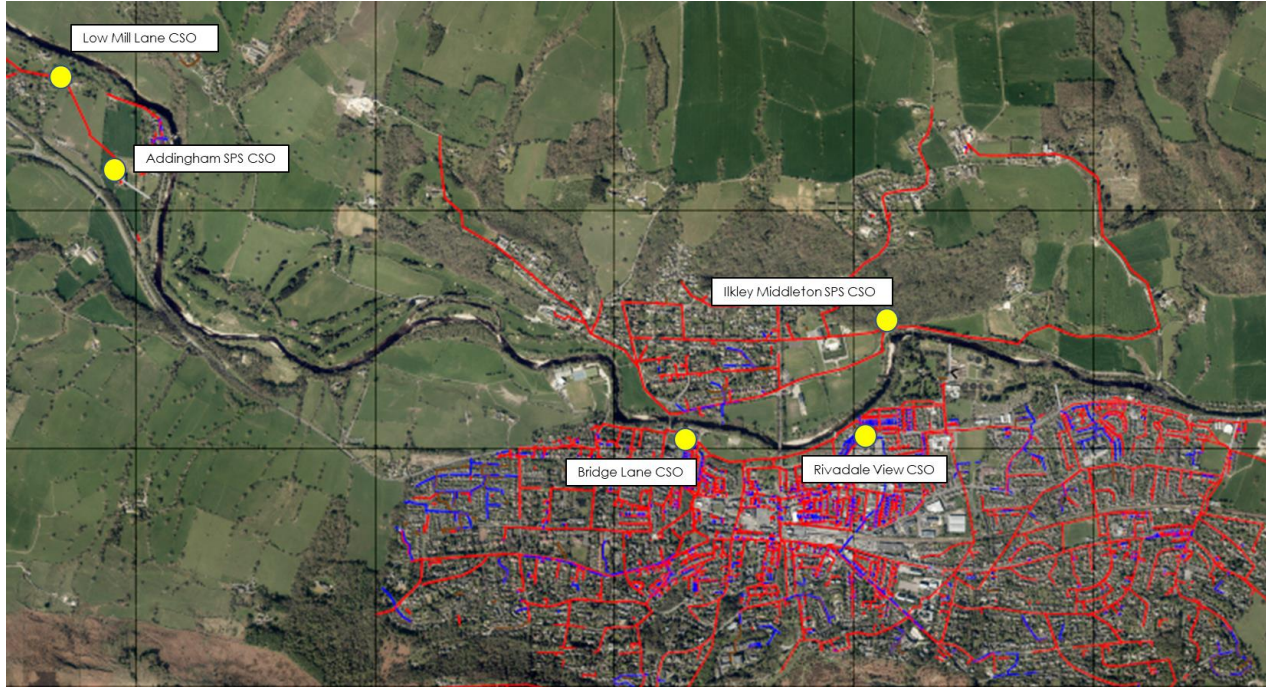
- *Our request for the survey questions on bathing status as the customer engagement document provides the analysis but not the questions asked. This is a flaw in the reporting as survey questions should be included.*
- *Diversity of respondents to your survey*

The link provided to our [bathing water customer research](#) includes the survey questions, analysis and sample profile for the survey. At the bottom of each slide covering survey responses, you will find the survey question. On slide 28, you will also find details on the survey profile for the respondents.

PR24 and Financing

- *Our question 3.3 on static operational costs but escalating finance costs*
- *The costs of 500M shareholder investment/ loan to consumers and 3.7 the costs of debt on our bills*

Accelerated Infrastructure – Upstream Overflows



- 1 discharge per bathing water season (May – September) and no more than 10 per year on average
- Delivered by end of March 2026
- Storage solutions

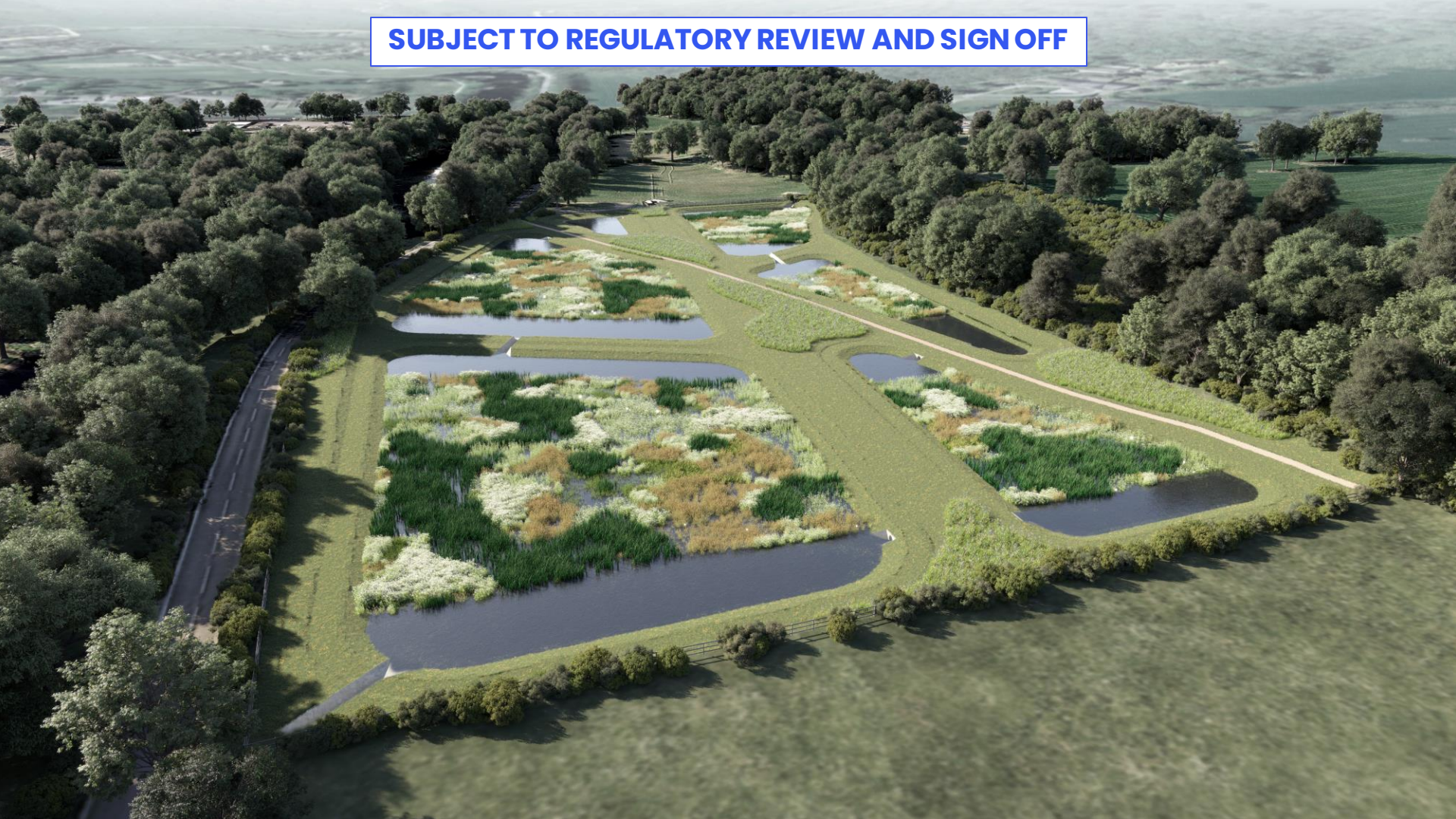
Accelerated Infrastructure – Ilkley WWTW

- 1 discharge per bathing water season (May – September) and no more than 10 per year on average via storm storage
- Increase in flow to full treatment (FFT) via Aerated Horizontal Sub Surface Flow Rushbed (AHSSF rushbed)
- Tertiary treatment via integrated constructed wetland (ICW)
- Delivered by end of March 2026



SUBJECT TO REGULATORY REVIEW AND SIGN OFF

SUBJECT TO REGULATORY REVIEW AND SIGN OFF



SUBJECT TO REGULATORY REVIEW AND SIGN OFF



AMP 7 Storm Overflow Reduction

Within the Ilkley catchment, we have two further projects being completed in AMP 7 to reduce storm overflows:

- **Ben Rhydding:** £900k investment in Ben Rhydding to line 2.8km of sewer to prevent groundwater infiltration into the network to reduce flows in the sewers. Once completed, will reduce discharges from the works by approximately 15%.
- **Wyvil Crescent:** £500k investment at Wyvil Crescent, Ilkley to separate surface water from wastewater to reduce the frequency and duration of overflows. Five new manholes and will be constructed alongside a new 130-metre surface water sewer. It is expected that the surface water separation project will reduce discharges from the storm overflows by more than 50%.

Engagement Event

- Share updates from our project teams on proposed investment within the Ilkley catchment
- Ilkley Playhouse, 20th March, 15:00 – 18:30